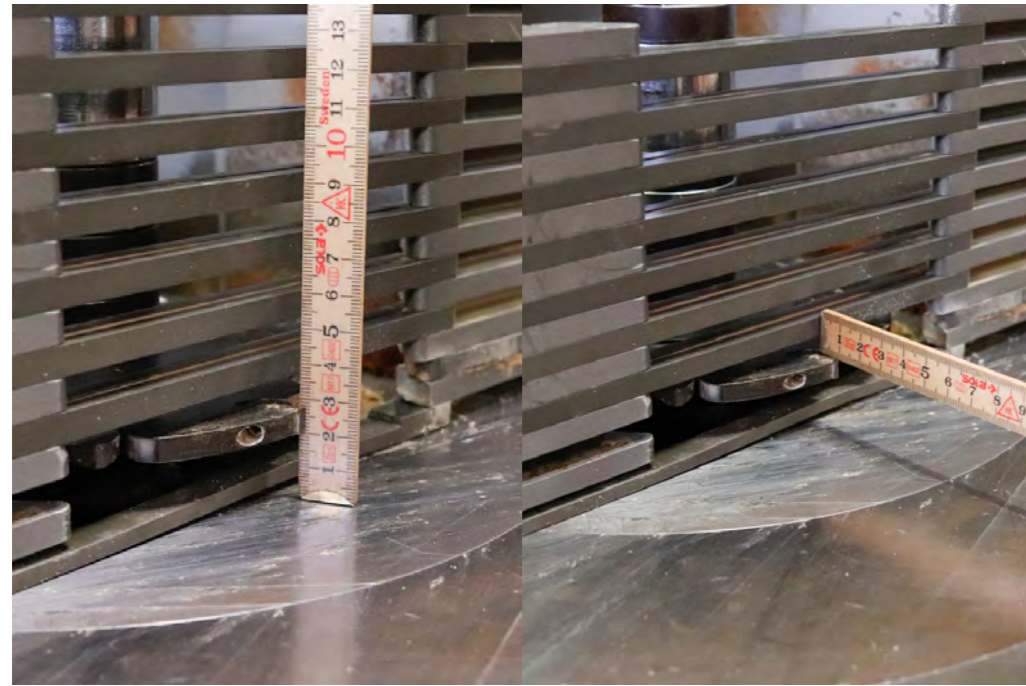
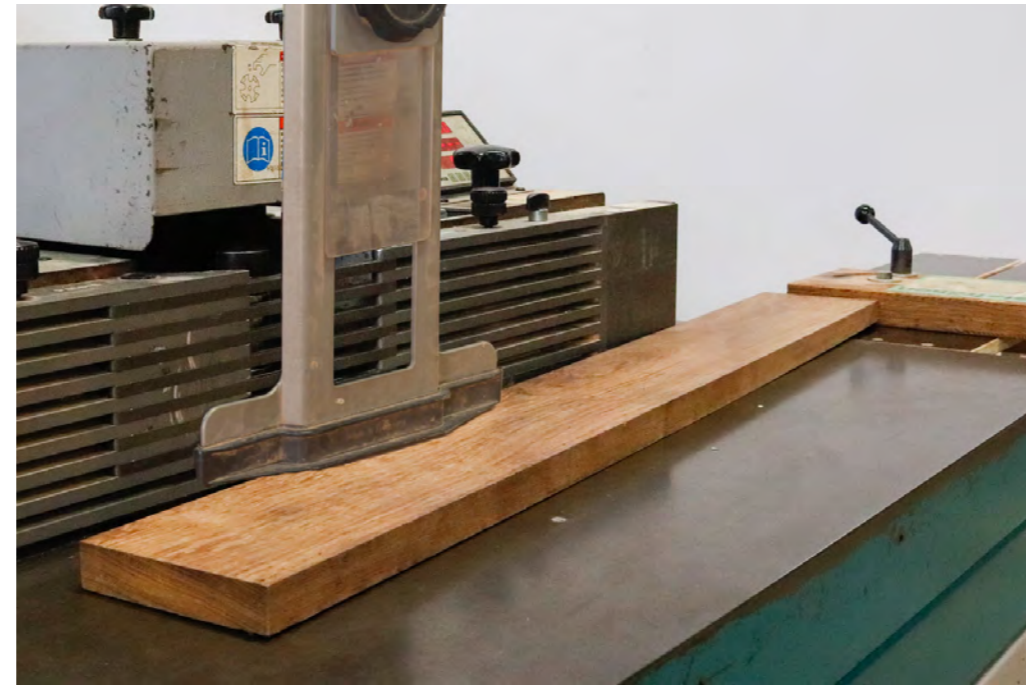


Safe Work at the Router



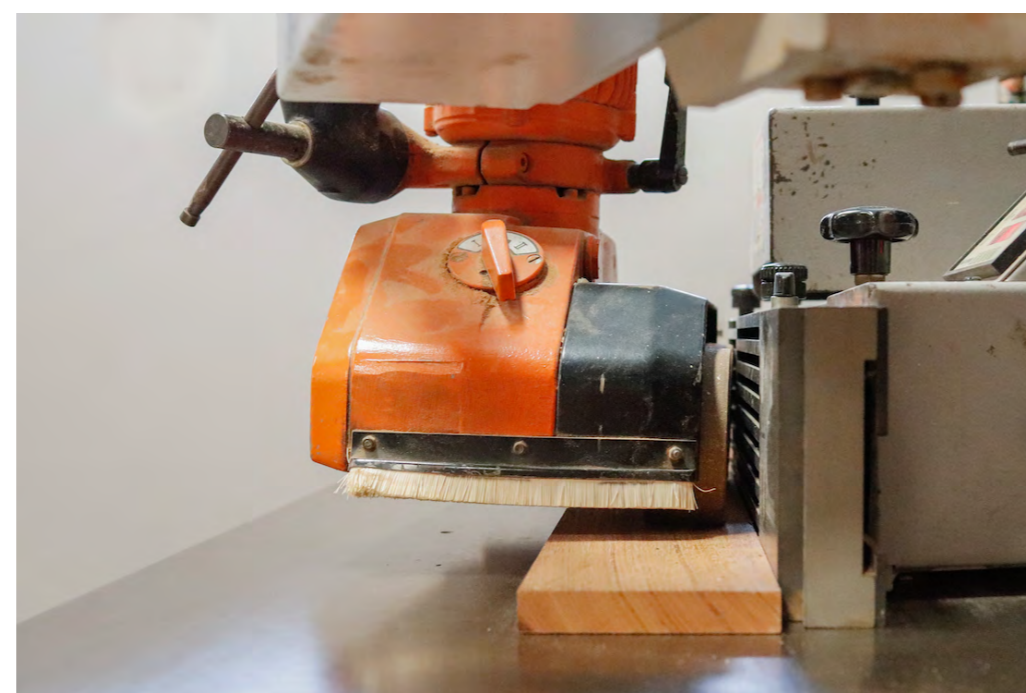
Adjustment height and depth of the milling head.



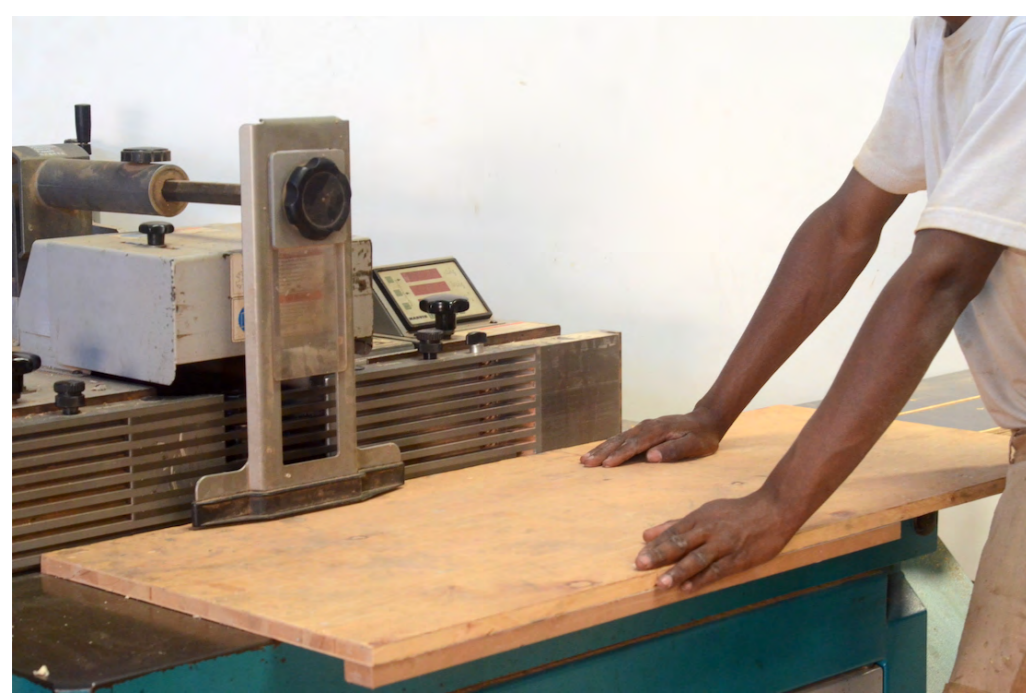
Inset routing of big pieces with kickback protection.



Routing of short edges with sliding fence.



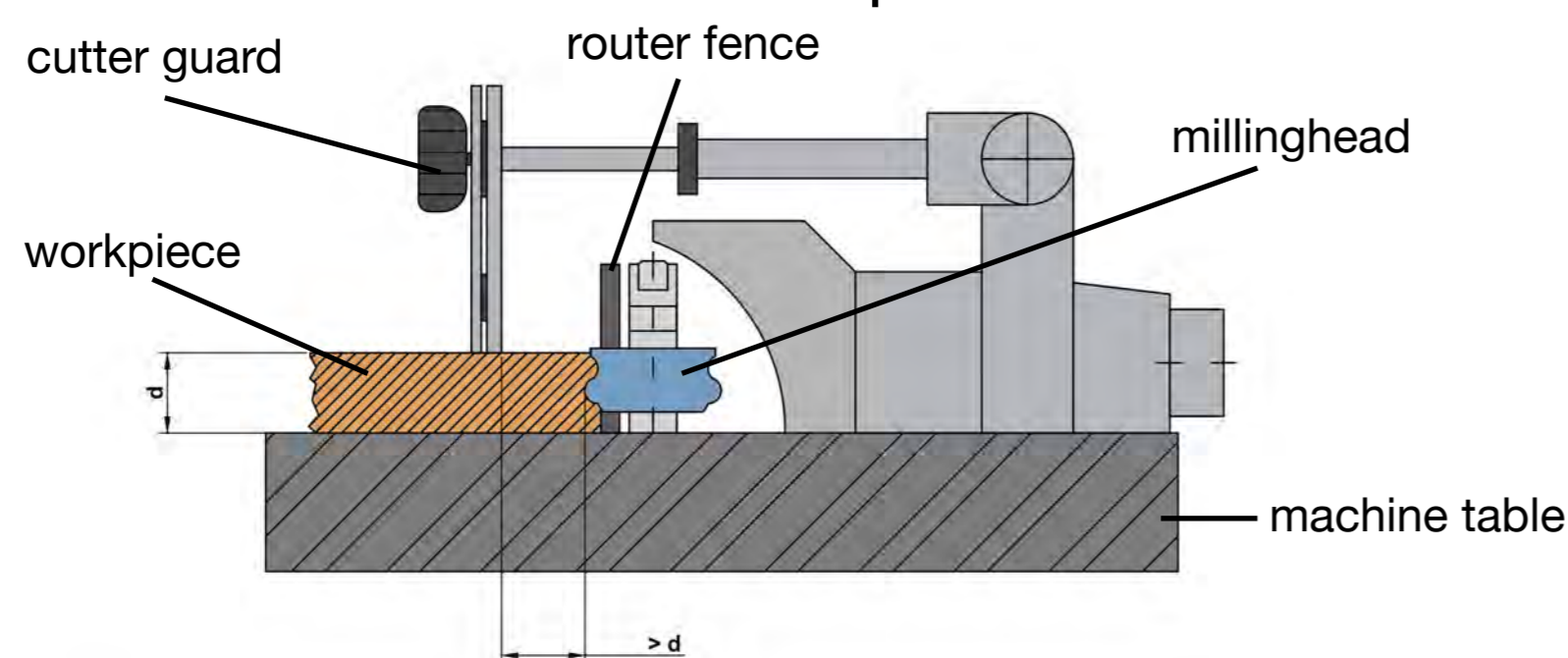
Routing of straight pieces at the router fence with the power feeder.



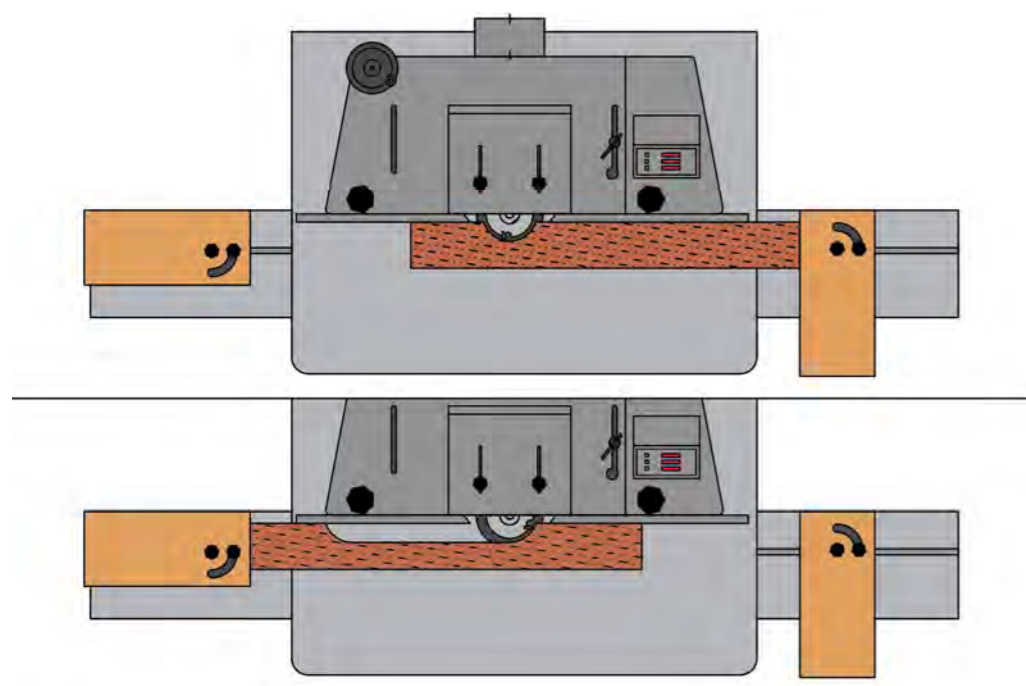
Routing of wide pieces at the router fence with cutter guard.



Routing of small pieces at the router fence with cutter guard and push block.



Protrusion of the cutter guard over the router is at least the thickness of the workpiece.



Adjustments of stop blocks for inset routing according to start- and endpoint.



Inset routing of small pieces with clamp strip and kickback protection.

General information

- Turn off the machine before cleaning and maintenance and make sure that it will not start accidentally.
- Operators must be physically fit and need to be instructed before they use the machine.
- Wear tight clothes, safety shoes and ear protection. Use of Googles is optional
- Turn off the machine when you leave.

Tools

- Use only milling heads with MAN, BG-TEST or hand feeding marking, even if power feeder or push block is used.

Adjustment

- Never put the milling head, the fixing nut or the spacers directly on the machine table.
- Close the table spindle hole as much as possible.
- Set the rotation speed according to the markings on the milling head or the diagram.
- Use the threat of the fixing nut completely.
- Adjust first the milling height and second the depth.
- Adjust router cutter guards, safety devices and the table extension (for big pieces) and fix kickback protection for inset routing.

Use the power feeder whenever it is possible, even when you route a sample.

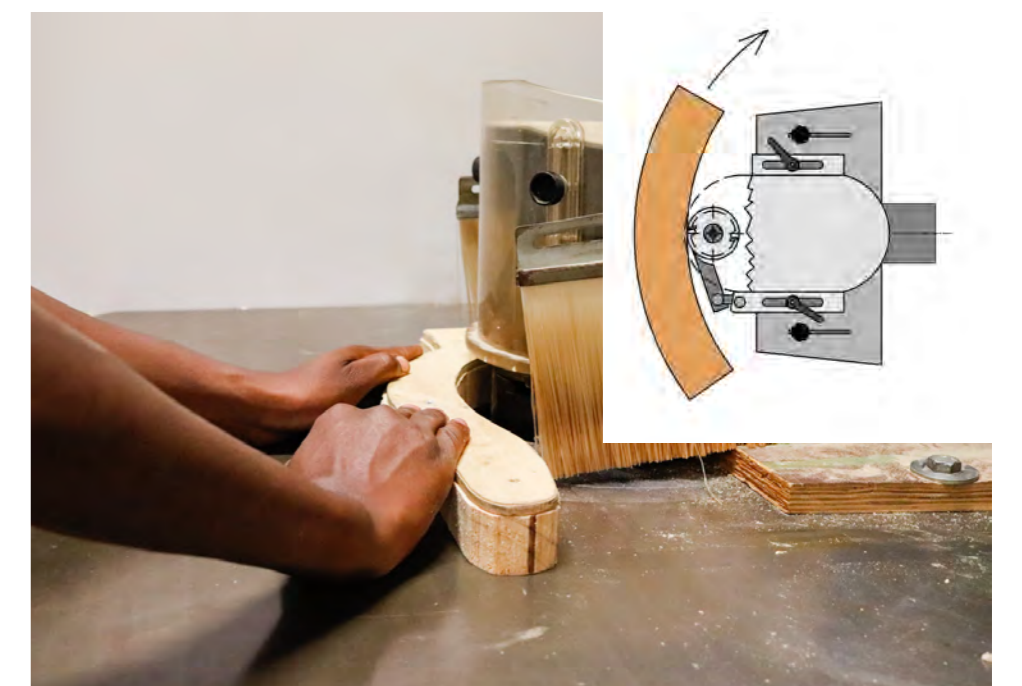
Operation

- Use devices also if you do only one piece.
- At the feed motion put your hands with closed fingers flat on the workpiece.
- Use the push block in the danger zone, replace broken push blocks.
- Don't remove splitters or shavings by hand.
- Use the machine only with extraction and according to the operating instructions.

Electrical installation & repair of machines should always be done by a professional electrician, to avoid accidents and prevent fire!



Routing of curved pieces with the copy ring and the round cutter guard – Copy-ring down.



Routing of curved pieces with the copy ring and round cutter guard – Copy-ring up.

proWOOD
promoting competence
in wood technology



Supported by

Invest for Jobs
Opportunities for Growth in Africa

On behalf of



Federal Ministry
for Economic Cooperation
and Development

Implemented by

